

# Foglight for SQL Server

Comprehensive performance monitoring, diagnosis and analytics for virtualized and non-virtualized databases

Whether it's physical, virtualized or both, keeping your database at peak performance is paramount to ensuring business continuity. For this, database administrators (DBAs) need a clear, up-to-the-second view into performance metrics. Ideally, they need unattended, 24x7 data collection with automated-alert capabilities.

Unfortunately, most native database-monitoring tools don't offer these capabilities. Many can even cause system drag that adds to performance issues.

Foglight for SQL Server gives DBAs the clarity they need to quickly and easily detect, diagnose, resolve and report on performance issues — wherever, whenever and however they occur.

Foglight ensures optimal database performance with comprehensive database, storage and virtualization monitoring and advanced workload analytics — providing a wealth of

information at a fraction of the impact of conventional collection methods.

Its intuitive, web-based interface allows DBAs to assess enterprise-level performance at a glance.

And with a single installer, Foglight for SQL Server is easy to deploy so you can be up and running in no time — with minimal footprint and without agent overhead drag on monitored hosts.

## KEY FEATURES

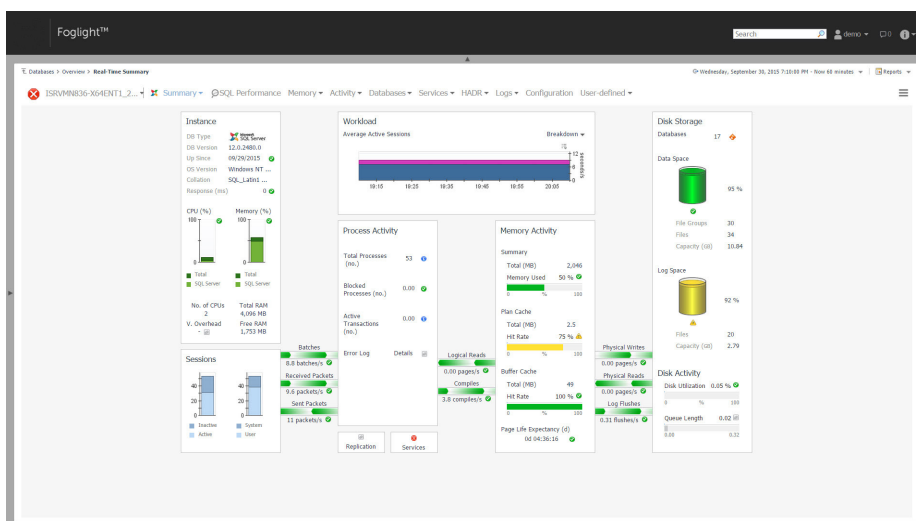
**Global view** — Determine your most critical instance alarms and immediately take action to resolve performance issues, both for SQL Server and across platforms.

**SQL Performance Investigator** — Turn granular data into action with multi-dimensional drilldowns. Get complete historical session data, investigate high-traffic areas in the system and

Detect, diagnose, resolve and report on performance issues — wherever, whenever and however they occur.

## BENEFITS:

- Get real-time and historical database performance monitoring of both virtualized and non-virtualized databases.
- View all your databases with an intuitive, web-based dashboard.
- Diagnose and resolve issues faster with multidimensional drilldowns and built-in expert advice.
- Proactively handle business-critical performance issues with accurate alerts.
- Experience simplified installation, deployment and administration, with no install requirements on the database.



Intuitive dashboards provide a complete view of your virtualized and non-virtualized databases so you can diagnose and resolve issues faster.

generate reports on SQL Server and SQL Server Analysis Services.

**Multidimensional SQL workload drill-downs** — Drill into the datacube to view every dimension of your data, including users, programs, SQL and sessions.

**Automated change tracking** — Find out when changes to server, instance, database and schema environments occur, as well as application SQL degradations.

**Comparison reporting** — Identify discrepancies quickly and easily by comparing system configurations, execution plans, objects and more to historical data.

**Lock analysis** — Resolve SQL Server concurrency issues in record time with historical reviews of blocking-lock scenarios.

**Built-in intelligence** — Ensure that alarms are only triggered when baselines are breached with integrated IntelliProfile baselines.

**TempDB monitoring** — Monitor TempDB performance metrics, including wait times, and view all sessions occupying

TempDB. Be alerted when TempDB runs out of storage.

**Wait-state analysis** — Diagnose wait statistics to easily determine where waits are occurring and what is causing the event. View wait-event data down to the statement level to rapidly resolve resource-related performance problems.

**Comprehensive alarm workflow** — Manage and annotate alarms, set up blackouts and search for past solutions.

**Enterprise-ready architecture** — Get the optional Foglight for Databases to increase flexibility and add a variety of architectural features that reduce implementation costs, ensure rapid ROI, and enable fast deployment and time to value.

**Enterprise-scale monitoring** — Monitor hundreds of database instances with a single monitoring instance.

**Low overhead** — Execute agentless data collection through remote agents to ensure that no more than 2 percent CPU overhead is added to monitored database instances.

**High granularity** — Ensure high integrity data collection with frequent collections at one-second intervals. Collection frequency is adjustable according to your overhead requirements.

**Embedded repository** — Store historical monitoring data in the embedded data warehouse. There is no need to purchase or install additional database instances for storage of monitoring data.

**SQL Server Integration Services (SSIS) and SQL Server Reporting Services (SSRS)** — Monitor and diagnose SSIS and SSRS.

## ABOUT QUEST

At Quest, our purpose is to solve complex problems with simple solutions. We accomplish this with a philosophy focused on great products, great service and an overall goal of being simple to do business with. Our vision is to deliver technology that eliminates the need to choose between efficiency and effectiveness, which means you and your organization can spend less time on IT administration and more time on business innovation.

## SYSTEM REQUIREMENTS

### SUPPORTED SQL SERVER DATABASE VERSIONS

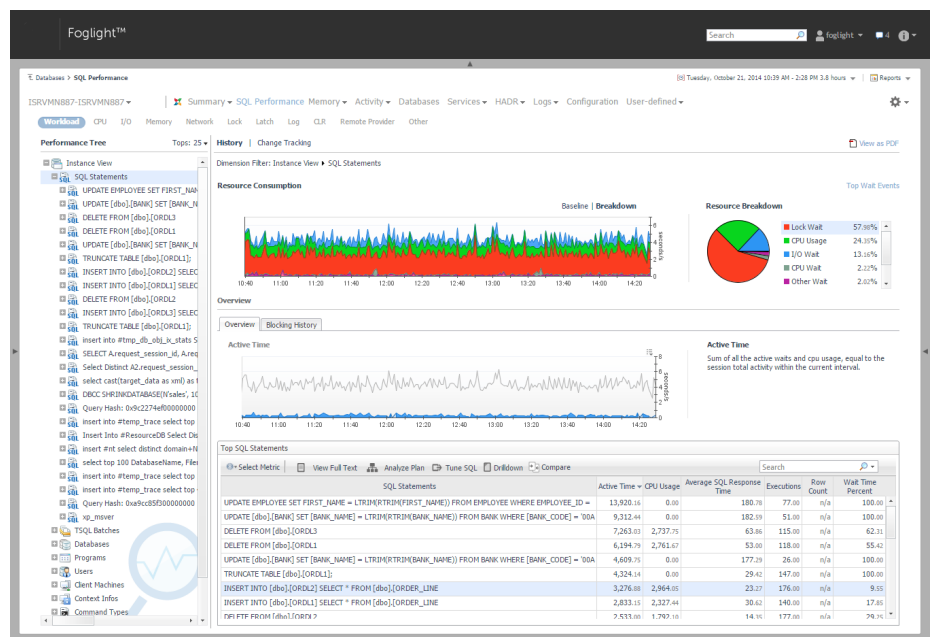
2005 through 2019

Foglight is a web-based application and supports a wide range of client browser and database-server platforms.

Please visit our website for detailed information about supported platforms.

### SUPPORTED DEPLOYMENT LOCATIONS

Both on-premises and cloud deployments



Drill into the datacube to view every dimension of your workload data, including users, programs, SQL and sessions.

Quest  
4 Polaris Way, Aliso Viejo, CA 92656 | www.quest.com  
If you are located outside North America, you can find local office information on our Web site.

Quest, Foglight and the Quest logo are trademarks and registered trademarks of Quest Software Inc. For a complete list of Quest marks, visit [www.quest.com/legal/trademark-information.aspx](http://www.quest.com/legal/trademark-information.aspx). All other trademarks are property of their respective owners.

© 2020 Quest Software Inc. ALL RIGHTS RESERVED.

DataSheet-Foglight4SQLServer-US-LP-58454

