

Deployment Plan

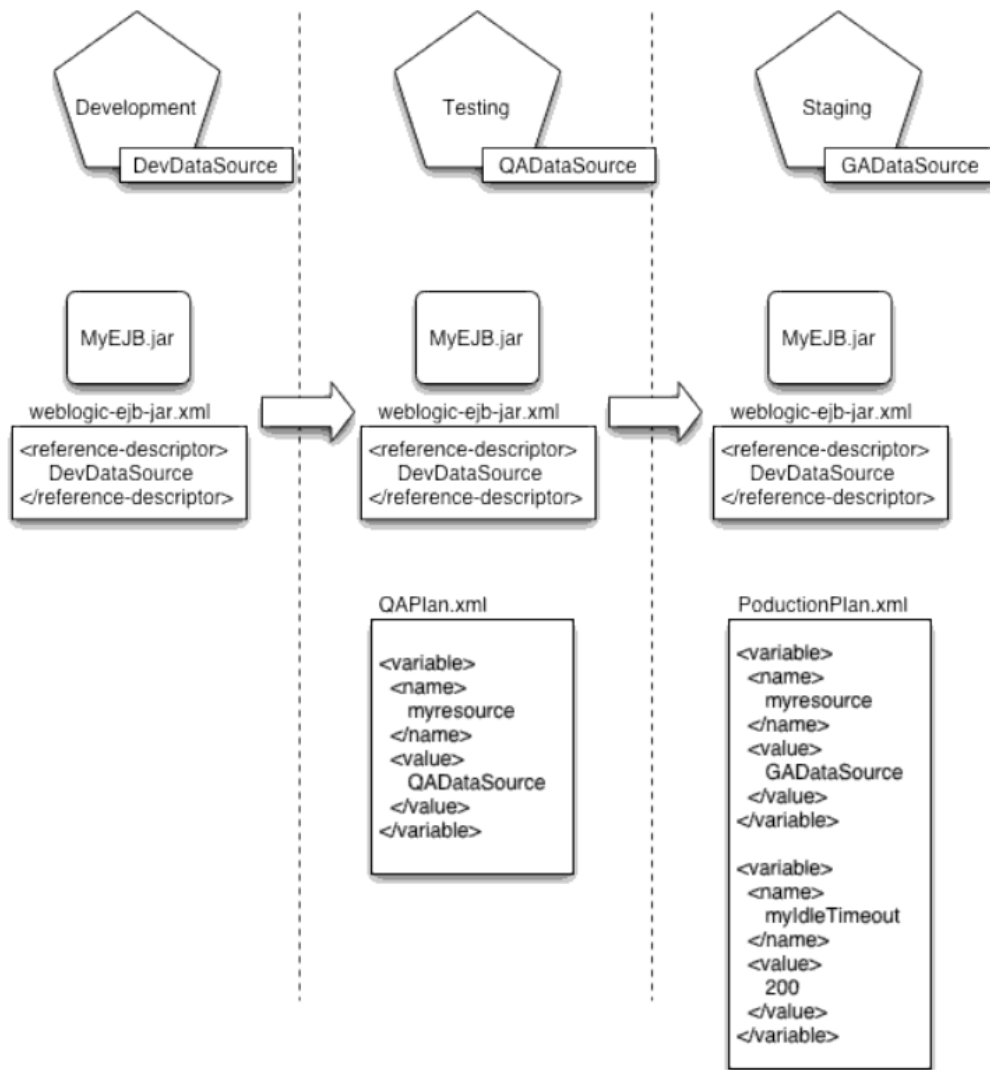
何謂Deployment Plan

當一個新的應用程式開發後，需要常常做測試，測試當中可能會反覆更改設定值，設定值可能要符合測試環境或正式環境而有所不同，依此狀況，可使用 **deployment plan** 來符合各種環境的需求。

Deployment plan 本身為 XML 文件，但它是 optional 的，且佈署時 **deployment plan** 並不包含在 application 內。Deployment plan 需要 WebLogic Server 9.2 以上版本才有此功能。

Deployment Plan的優點

- (1) 只要設定/修改 **deployment plan** 中的屬性值，不需修改 application 中的 **deployment descriptor**
- (2) 可製作不同的 **deployment plan** 來符合不同環境需求，例如：**QAPlan.xml**，**ProductionPlan.xml**



如何建立 deployment plan

建立 deployment plan 有兩種方法：

- (1) weblogic.PlanGenerator
- (2) Administration Console

首先需符合下列目錄架構：

```
mkdir <root>
mkdir <root>\app
mkdir <root>\plan
```

將程式放置到 app 目錄下，deployment plan 放置於 plan 目錄下。

以下例子為使用 weblogic.PlanGenerator 產生 plan.xml：

- (a) 首先設定好 CLASSPATH:執行 setWLSEnv.sh(Linux or Unix) or setWLSEnv.cmd(windows)
- (b) java weblogic.PlanGenerator -root <root>

(c) 產生的 plan.xml 會放置於<root>\plan，下圖為 plan.xml 的片段內容

```
1 <?xml version='1.0' encoding='UTF-8'?>
2 <deployment-plan xmlns="http://www.bea.com/ns/weblogic/deployment-plan" xmlns:xsi="http://www.w3.org/2001/XMLSchema-instance"
3   <application-name>Web14</application-name>
4   <variable-definition>
5     <variable>
6       <name>EjbReferenceDescription_Hello_JNDIName_12324164743490</name>
7       <value xsi:nil="true"></value>
8     </variable>
9     <variable>
10      <name>EjbReferenceDescription_OracleSessionBean_JNDIName_12324164743491</name>
11      <value xsi:nil="true"></value>
12    </variable>
13    <variable>
14      <name>ResourceDescription_mysql_JNDIName_12324164743492</name>
15      <value xsi:nil="true"></value>
16    </variable>
17  </variable-definition>
18  <module-override>
19    <module-name>Web14_wls8.war</module-name>
20    <module-type>war</module-type>
21    <module-descriptor external="false">
22      <root-element>weblogic-web-app</root-element>
23      <uri>WEB-INF/weblogic.xml</uri>
24      <variable-assignment>
25        <name>EjbReferenceDescription_Hello_JNDIName_12324164743490</name>
26        <xpath>/weblogic-web-app/ejb-reference-description/[ejb-ref-name="Hello"]/jndi-name</xpath>
27      </variable-assignment>
28      <variable-assignment>
29        <name>EjbReferenceDescription_OracleSessionBean_JNDIName_12324164743491</name>
30        <xpath>/weblogic-web-app/ejb-reference-description/[ejb-ref-name="OracleSessionBean"]/jndi-name</xpath>
31      </variable-assignment>
32      <variable-assignment>
33        <name>ResourceDescription_mysql_JNDIName_12324164743492</name>
34        <xpath>/weblogic-web-app/resource-description/[res-ref-name="mysql"]/jndi-name</xpath>
35      </variable-assignment>
36    </module-descriptor>
37  </module-override>
38 </deployment-plan>
```



(d) 詳細的指令參考請到：<http://edocs.bea.com/wls/docs103/deployment/wplangenerator.html>

(e) 下圖為佈署程式及 deployment plan 的路徑，也可由 admin console 修改比較常用的一些屬性值。

Overview | **Deployment Plan** | Configuration | Security | Targets | Control | Testing | Monitoring | Notes

Save

Use this page to view the installed configuration of a Web Application.

Name:	Web14	The name of this application deployment. More Info...
Context Root:	/Web14	The specific path at which this web application is found by a servlet. More Info...
Path:	C:\TEMP\Web14\app\Web14_wls8_war	The path to the source of the deployable unit on the Administration Server. More Info...
Deployment Plan:	c:\temp\web14\plan\plan.xml	The path to the deployment plan document on Administration Server. More Info...
Staging Mode:	(not specified)	The mode that specifies whether an application's files are copied from a source on the Administration Server to the Managed Server's staging area during application preparation. More Info...
Security Model:	DDOnly	The security model specifies how this deployment should be secured. More Info...
 Deployment Order:	<input type="text" value="100"/>	An integer value that indicates when this unit is deployed, relative to other deployable units on a server, during startup. More Info...
 Deployment Principal Name:	<input type="text"/>	A string value that indicates what principal should be used when deploying the file or archive during startup and shutdown. This principal will be used to set the current subject when calling out into application code for interfaces such as ApplicationLifecycleListener. If no principal name is specified, then

Overview | Deployment Plan | **Configuration** | Security | Targets | Control | Testing | Monitoring | Notes

General | Logging | Workload | Instrumentation | Spring Framework

Save

In this page, you define the configuration of the application deployment descriptor file that is associated with this Web application module.

Session cookies max age (in seconds):	<input type="text" value="-1"/>	The life span of the session cookie (in seconds) after which it expires on the client. More Info...
Session Invalidation Interval (in seconds):	<input type="text" value="60"/>	The time (in seconds) that WebLogic Server waits between doing house-cleaning checks for timed-out and invalid sessions, and deleting the old sessions and freeing up memory. More Info...
Session Timeout (in seconds):	<input type="text" value="3600"/>	The amount of time (in seconds) that a session can remain inactive before it is invalidated. More Info...
<input type="checkbox"/> Debug Enabled		Specifies whether to add JSP line numbers to generated class files to aid in debugging. More Info...
Maximum in-memory Sessions:	<input type="text" value="-1"/>	The maximum number of sessions to retain in memory More Info...
Monitoring Attribute Name:	<input type="text"/>	The monitoring attribute. More Info...
<input type="checkbox"/> Index Directory Enabled		Specifies whether the target should automatically generate an HTML directory listing if no suitable index file is found. More Info...